



SoLoMo 2012

**Todd Frederick
ACM-Chesapeake
Regional Digital Sales Director**





SoLoMo 2012

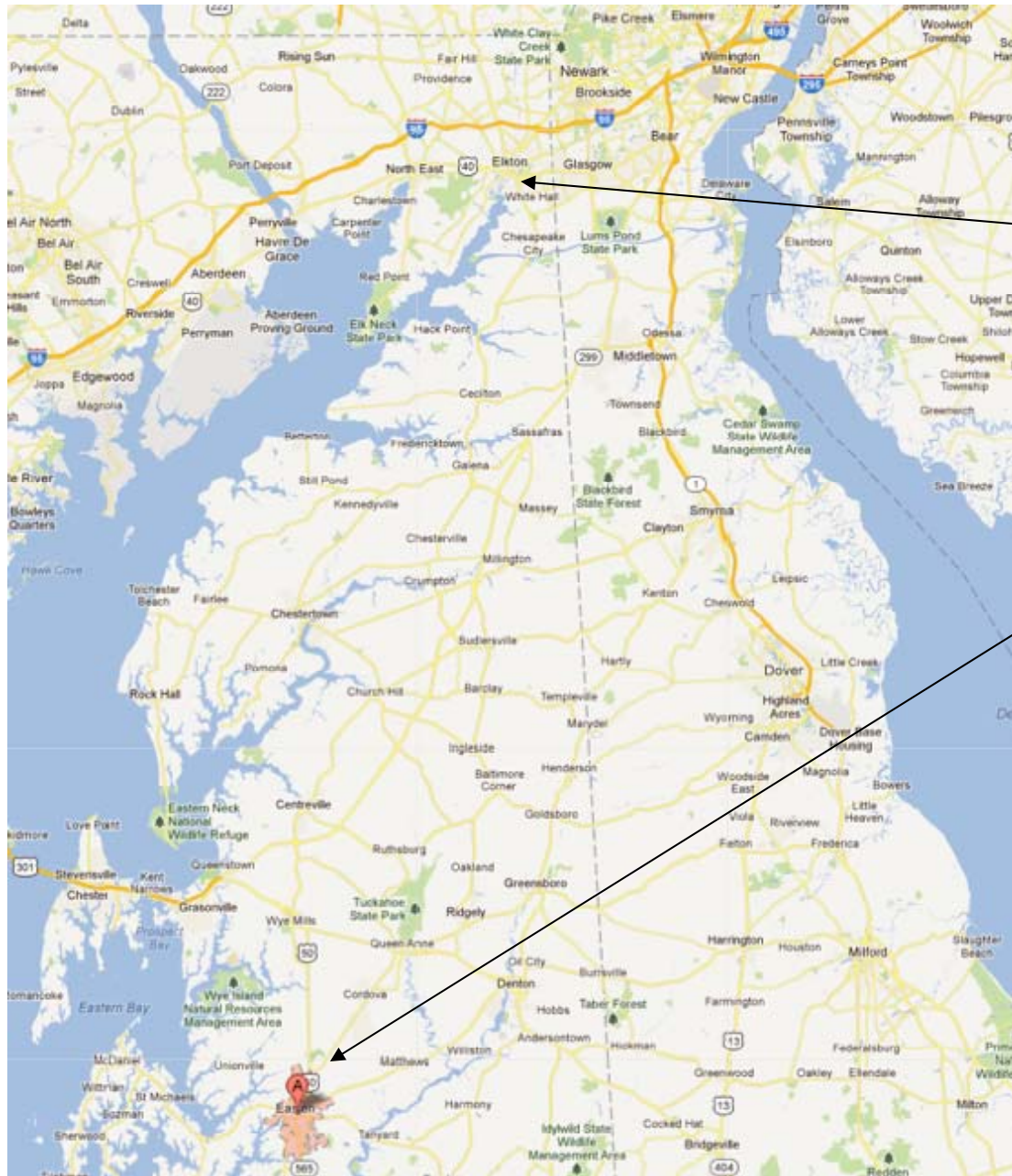


Deployed (so far) in 2 markets

Maryland:

Easton Star Democrat

Elkton Cecil Whig



Maryland:

Elkton Cecil Whig

13k circulation @ 3 days/wk

121k Unique visitors/mo

Easton Star Democrat

16k circulation @ 6 days/wk

77k Unique visitors/mo

The Deployment



- **Current**
- **Dormant**
- **New Advertisers**

The Blinder Group
Multimedia Sales Specialists



Deployment Information for

ACM

Chesapeake Publishing

ADVERTISER WORKSHOP (with Mike Blinder):

Tuesday April 10th in Easton, MD

Wednesday April 11th in Elkton, MD


Sales Engagement Week: April 16-22nd, 2012

With Blinder Associate/Trainer-Closers:

Barbara Wickman in Easton, MD

Frank Dorf in Elkton, MD

The Deployment



Learn how to grow your business on the web in just 2 hours!

Local Business Owners...
YOU'RE INVITED
to attend a FREE Advertiser Workshop:
"The ABC's of Interactive Marketing"
Speaker: Mike Blinder

People, young and old, don't use Yellow Pages anymore to find your business. They go to their computer screen! Getting found online is critical in being able to find new customers. Mike will reveal some of the latest methods you can use today to make sure your business is found online, over your competitors!

"The ABC's of Interactive Marketing" topics will include:

- A basic overview on the workings of the Internet
- Marketing applications of a Web site
- E-commerce: the trend & the future
- Getting your Web site & content found
- World Wide Web marketing trends
- How to work with local media to make the Web work for you!

Mike Blinder is a radio and TV talent who moved out from behind the mic to explore and excel in a career in marketing and sales. Rising through the ranks of radio and TV management, he launched the internet division for a large media group. From there, his career "blossomed," and he has since consulted for some of the world's most prestigious media companies helping them bring the most effective multimedia solutions to their local customers. Today, more than 50,000 businesses of all sizes world-wide, including Citicorp and SAP Software, are utilizing multimedia marketing programs that Mike's company designed. Mike also owns and manages OperaWeb.com, the leading interactive marketing firm for the classical music industry. Mike's latest book, *Survival Selling, Even in the Toughest Times*, has received international acclaim as a "must read" guide for business people to prosper...especially in a challenging economy!

SURVIVAL SELLING
EVEN IN THE TOUGHEST TIMES
Discovers 2 Business Sales using Back 2 Basic Skills
MIKE BLINDER

Tuesday April 10, 2012
The Avalon Theatre • 40 E. Dover St. • Easton, MD
7:30 am to 9:30 am
Continental Breakfast will be provided

Please RSVP
tfrederick@cbspub.com
Or call
410-822-1500

Sponsored by:
THE STAR
STARDOM
Talbot County
CHAMBER OF COMMERCE



Qualify Prospects:

When you are inviting businesses to the event, or setting up sales calls for the Blinder Associate/ Closer coming to town; try to have these 6 criteria met for the attendee of the workshop. We are looking for “**DELMAR**” in every call:

- **DECISION MAKER**- is this a business owner or manager who can say “yes?” Or, is the attendee someone who must take the information “up the line” to a boss or other manager? Try to target “**Decision Makers**”. And, don’t forget any influencers (partners, media consultants)
- **ESTABLISHED**- is the person representing a business currently open and generating revenue? Or, is it a “start up” business that is in planning or in initial phases of gaining momentum? Try for an **Established** business. Many people who are starting businesses are great prospects for “down the road” advertising campaigns. But, remember, this sales effort will be highly focused on near term closing over a short period of time!
- **LOCALLY FOCUSED** - is the business interested in local customers from your area of influence. Some local businesses offer their products globally. Our “core competency” is turning our local readers into their **Local** customers.
- **MARKETING BUDGET**- has the business you are targeting performed any marketing/ advertising in the past? Either with you or with competing media? We prefer someone who has **Marketed** in the past since we know they can spend money and have a need to advertise. Again, we are looking for those likely for a near term close, through this effort.
- **AFFORD THE OFFERING** – based on the size/ scope of the business, can they **Afford** the “price point” of the basic package being offered?
- **RAPPORT ESTABLISHED**- have you met this person and established any form of **Rapport** or trust? If not, you should do so prior to inviting them to a Workshop. Or, setting up a sales call. We suggest no less than 2 meetings prior to prospecting them for this sales effort.

Remember, the higher the “**DELMAR**” the higher the odds to close!

Some people will be attending based on the marketing we perform. They will register for the event and should be assigned to specific sales reps to be their “hosts”

If a person attending is assigned to you as a new prospect, please call them prior to the workshop (or visit them) and perform an evaluation:

Built Folders for Every Call:

- Competing media
- Look at their Web site pages
- Look at Search Rankings



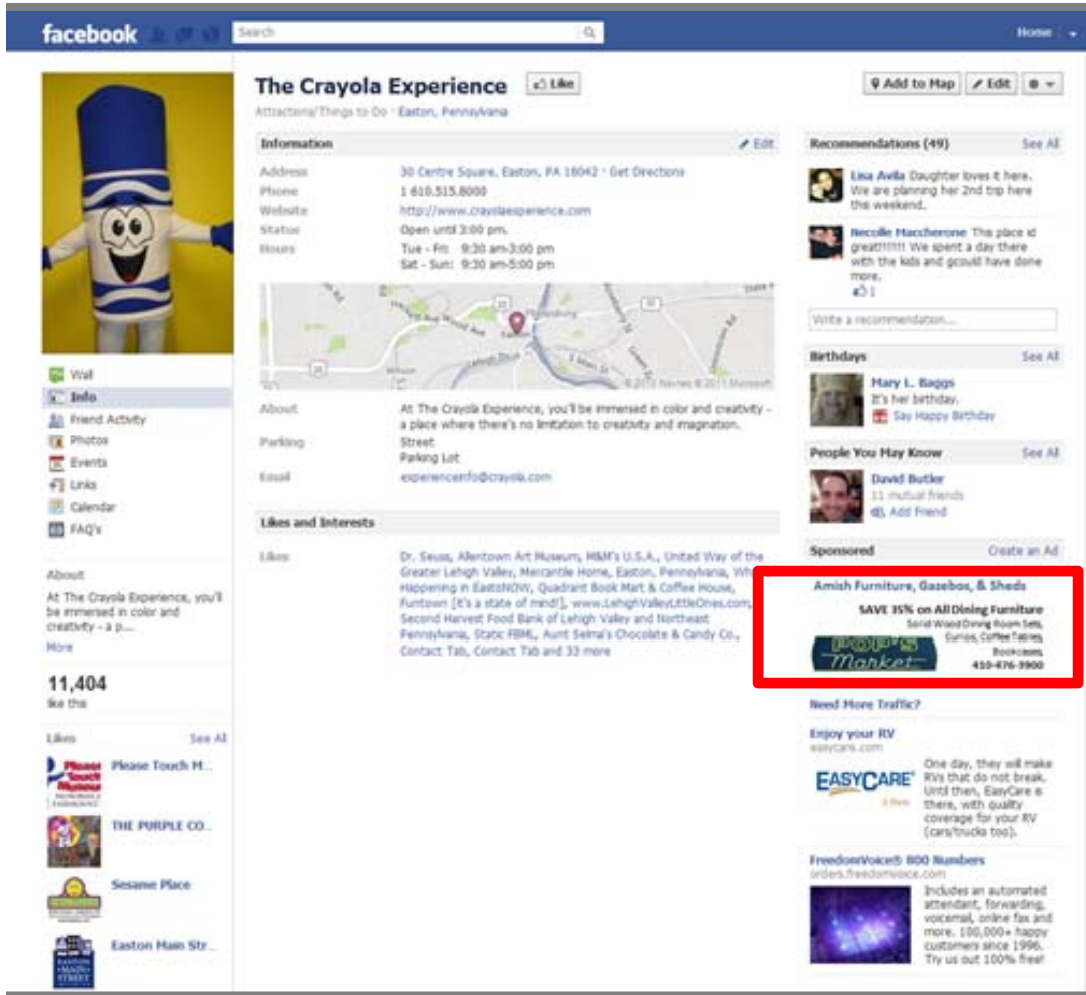
The program:



60,000/ month

300 x 250 ROS

The program:



The screenshot shows the Facebook page for 'The Crayola Experience'. The page header includes the Facebook logo, a search bar, and a 'Home' link. The main content area features a profile picture of a Crayola character, the page name 'The Crayola Experience', and a 'Like' button. Below this is an 'Information' section with details about the location (30 Centre Square, Easton, PA 18042), phone number (1 800.515.8000), website (http://www.crayolaexperience.com), and hours of operation. A map shows the location in Easton, Pennsylvania. To the right of the map is a 'Recommendations' section with user reviews. Below the map is a 'Likes and Interests' section. On the left side of the page, there is a sidebar with links to 'Wall', 'Info', 'Friend Activity', 'Photos', 'Events', 'Links', 'Calendar', and 'FAQ's'. The bottom of the page shows a 'Like this' button with a count of 11,404 likes. A red box highlights an advertisement for 'Amish Furniture, Gazebos, & Shade' located in the 'Sponsored' section.

facebook

The Crayola Experience

Address: 30 Centre Square, Easton, PA 18042 - Get Directions
Phone: 1 800.515.8000
Website: http://www.crayolaexperience.com
Status: Open until 3:00 pm
Hours: Tue - Fri: 9:30 am-3:00 pm, Sat - Sun: 9:30 am-5:00 pm

Recommendations (49)

Bethdays

People You May Know

Sponsored

Amish Furniture, Gazebos, & Shade

SAVE 15% on All Dining Furniture

Need More Traffic?

Enjoy your RV

EASYCARE

FreedomVoice® 800 Numbers

75,000/ month
Impression based
Geo-targeted



Trappe MD Sheds

Google Search

I'm Feeling Lucky

[Advanced Search](#)

[Language Tools](#)

[Advertising Programs](#) - [Business Solutions](#) - [About Google](#)

©2009 - [Privacy](#)

Search

About 1,290,000 results (0.14 seconds)

Everything

Images

Maps

Videos

News

Shopping

More

Elfers, FL

Change location

Show search tools

[Amish Made Wood Vinyl Storage Sheds Furniture Eastern Shore ...](#)

[www.popsmarket.com/](#)

Located just below Easton along Rt. 50 in **Trappe MD**, this popular family owned ... distributors of fine quality to Amish built **sheds** & gazebos in all sorts of sizes, ...

[Places for Sheds near Trappe, MD](#)

[Pop's Market](#)

[www.popsmarket.com](#)

1 Google review

[Backyard Collections](#)

[www.thebackyardcollections.com](#)

Place page

[Two B Storage & Sales](#)

[maps.google.com](#)

Place page

[More results near Trappe, MD »](#)

[Build Shed Trappe MD | Shed Builders | Build Enclosure](#)

[www.servicemagic.com/.../All Contractors in Maryland](#)

Shed and Enclosure Contractors Directory for **Trappe, Maryland MD**. Find Customer-Rated, Prescreened Home Improvement Professionals for **Trappe, MD**.

[Storage Shed Builder Trappe MD | Build Shed, Barn, Playhouse](#)

[www.servicemagic.com/.../Trappe-MD/Shed-Barn-or-Playhouse-Build...](#)

Find **Shed**, Barn or Playhouse Contractors in **Trappe, MD** to help you Build a **Shed**, Barn, or Playhouse. All Trappe contractors are prescreened.

[Shed Repair Trappe MD | Shed, Barn, Playhouse, Storage Shed](#)

[www.servicemagic.com/.../Trappe-MD/Shed-Barn-or-Playhouse-Repair...](#)

Find **Shed**, Barn or Playhouse Contractors in **Trappe, MD** to help you Repair a **Shed**, Barn or Playhouse. All Trappe contractors are prescreened.

[Eastern Shore of Maryland Sheds, Gazebo, Farm Equipment, Amish ...](#)

[finditinsapeake.com/.../Eastern-Shore-of-Maryland-Sheds-Gazebo...](#)

Pop's Market in **Trappe, MD** provides the eastern shore of Maryland with **sheds**, gazebo, farm equipment, amish furniture, golf carts & more.

[Storage Sheds Barns, Swing Kingdom Swingsets, Country Lane](#)

[www.thebackyardcollections.com/](#)

The Backyard Collections offers you vinyl swingsets, storage sheds, barns, gazebos, outdoor lawn furniture, pergolas and more for your outdoor living pleasure ...

[Sheds and Storage - Trappe, MD - Newszap - Delmarva Yellow Pages](#)

[delmarvayellowpages.newszap.com/MD-Trappe/Sheds-and-Storage](#)

Find **Sheds** and Storage local business listings in & near **Trappe, Maryland**. Get **Sheds** and Storage business addresses, phone numbers, driving directions, ...

[foursquare :: The shed :: Trappe, Maryland](#)

[https://foursquare.com/v/the-shed/4cc2e828914137049395b755](#)

Map for Trappe Maryland



Ads - Why these ads?

[Amish Storage Sheds](#)

[www.backyardandbeyond.net/](#)

Buy Directly From The Manufacturer. Made By Skilled Amish Crafts

[Clearance Center Shed](#)

[www.shedliquidators.com/](#)

Shed Prices Hundreds Below Warrantied, Delivered, & Installed

[Storage Sheds Maryland](#)

[www.barns.com/](#)

Buy barns, stables, garages & more. On sale **Maryland**. Get quotes

[Clearance Center Shed](#)

[www.backyardbuildings.com/](#)

Shed Prices Hundreds Below Warrantied, Delivered, & Installed

[Sheds Maryland](#)

[www.mysheds.net/](#)

Pre-Fab Double & Two Story **Sheds**. Built On-Site. **MD**, VA

[Amish Sheds & Barns](#)

[www.homesteadstructures.com](#)

Amish **Sheds** from Lancaster to your backyard anywhere in **USA**

[Amish Sheds Direct](#)

[www.shedsunlimited.net/](#)

Custom Built **Sheds**, Garages, Barns Vinyl and wood building Direct

[Sheds](#)

[www.homedepot.com/](#)

homedepot.com is rated ★★★★★

Get It Installed By The Experts at

The Home Depot. Build A Great New

Eastern Shore of Maryland Sheds, Gazebo, Farm Equipment, Amish Furniture, Golf Carts

www.shedseasternshore.com

Email Marketing...

chicago casual e...

Most Visited

Getting Started

Latest Headlines

Eastern Shore of Maryland Shed...

Pop's Market

Home

Map & Directions

Gallery

Reviews

Our Market

About Us

f t i n e +



Pop's Market Inc | Amish Furniture, Sheds, Gazebo & More in Trappe, MD

Our highly recognizable building on Route 50 with an Amish buggy sitting up on the roof was built in 1992 and it features a truly unique assortment of furniture and other items including:

- Solid Wood Dining Room Sets, Hutches & Bedroom Sets
- Amish-made Curios, Coffee Tables, End Tables, Entertainment Centers, Bookcases,
- Marlinhouses, Birdhouses, Feeders & Mailboxes
- Lighthouses, Buoys, Pier Posts
- Collectibles
- Antiques
- & Much More!



Our Outdoor Store also showcases hundreds of fine new and used products for your home, business, farm, yard or garden. Our top selling products continue to be wood and vinyl storage sheds. But we continue to add new items every year. Below is a list of just some of the hundreds and hundreds of products, accessories and equipment you can take home from right off our 5 acre lot at Pop's Market:

- Wood & Vinyl Sheds, Gazebos & Cabanas
- Washing Wells, Windmills, Lighthouses, & Trellises
- Children's Playhouses, Gyms & Playsets
- Poly & Wood Lawn Furniture, Solid Wood Picnic Tables
- Animal Shelters, Dog Houses, Cat Houses, Chicken Coops
- New, Used & Rebuilt Golf Carts, New Trailers
- New, Used & Rebuilt Farm Equipment including Tractors, Plows, Grapes, Diapers, Broadcast Spreaders, Planters and Disks
- & Much More



And of course, if we don't have exactly what you are looking for here on our lot, we will try to custom order it for you.

Contact Us

By email

By phone: 410-476-3900

Email me this info

Location



Search About 1,290,000 results (0.14 seconds)

Everything

Images

Maps

Videos

News

Shopping

More

Effers, FL

Change location

Show search tools

Amish Made Wood Vinyl Storage Sheds Furniture Eastern Shore ...
www.popsmarket.com/
Located just below Easton along Rt. 50 in **Trappe MD**, this popular family owned ... distributors of fine quality to Amish built **sheds & gazebos** in all sorts of sizes, ...

Places for Sheds near Trappe, MD
Pop's Market
www.popsmarket.com
1 Google review

Backyard Collections
www.thebackyardcollections.com
Place page

Two B Storage & Sales
maps.google.com
Place page

More results near **Trappe, MD** »

Build Shed Trappe MD | Shed Builders | Build Enclosure
www.servicemagic.com/... » All Contractors in Maryland
Shed and Enclosure Contractors Directory for **Trappe, Maryland MD**. Find Customer-Rated, Prescreened Home Improvement Professionals for **Trappe, MD**.

Storage Shed Builder Trappe MD | Build Shed, Barn, Playhouse
www.servicemagic.com/... » Trappe-MD/Shed-Barn-or-Playhouse-Buil...
Find **Shed**, Barn or Playhouse Contractors in **Trappe, MD** to help you Build a **Shed**, Barn, or Playhouse. All Trappe contractors are prescreened.

Shed Repair Trappe MD
www.servicemagic.com/... » Trappe-MD/Shed-Barn-or-Playhouse-Rep...
Find **Shed**, Barn or Playhouse Contractors in **Trappe, MD** to help you Repair a **Shed**, Barn or Playhouse. All Trappe contractors are prescreened.

Eastern Shore of Maryland Sheds, Gazebo, Farm Equipment, Amish
findinchesapeake.com/... » Eastern-Shore-of-Maryland-Sheds-Gazebo...
Pop's Market in **Trappe, MD** provides the eastern shore of Maryland with **sheds**, gazebo, farm equipment, amish furniture, golf carts & more.

Backyard Bams, Swing Kingdom Swingsets, Country Lane ...
www.thebackyardcollections.com/... » Backyard-Bams-Swing-Kingdom-Swingsets-Country-Lane...
The Backyard Collections offers you vinyl swingsets, storage **sheds & barns**, gazebos, outdoor lawn furniture, pergolas and more for your outdoor living pleasure ...

Sheds and Storage - Trappe, MD - Newszap - Delmarva Yellow Pages
delmarvayellowpages.newszap.com/MD-Trappe/Sheds-and-Storage
Find **Sheds** and Storage local business listings in & near **Trappe, Maryland**. Get **Sheds** and Storage business addresses, phone numbers, driving directions, ...

foursquare :: The shed :: Trappe, Maryland
https://foursquare.com/v/the-shed/40c2e828914137049395b755

Map for Trappe Maryland Sheds

Ads - Why these ads?

Amish Storage Sheds
www.backyardandbeyond.net/
Buy Directly From The Manufacturer.
Made By Skilled Amish Craftsmen.

Clearance Center Sheds
www.shedliquidators.com/
Shed Prices Hundreds Below Retail!
Warranted, Delivered, & Installed.

Storage Sheds Maryland
www.barns.com/
Buy barns, stables, garages & more.
On sale **Maryland**. Get quotes.

Clearance Center Sheds
www.backyardbuildings.com/
Shed Prices Hundreds Below Retail!
Warranted, Delivered, & Installed.

Sheds Maryland
www.mysheds.net/
Sheds - Barns - Sites - MD, VA, DC.

Amish Sheds & Barns
www.homedepot.com/
for your backyard anywhere in USA

Amish Sheds Direct
www.sheddirect.net/
Custom Built **Sheds**, Garages, Barns
Vinyl and wood building Direct

Sheds
www.homedepot.com/
homedepot.com is rated ★★★★★
Get it installed by The Experts at
The Home Depot Build a Private Man...

Eastern Shore of Maryland Sheds, Gazebo, Farm Equipment, Amish Furniture, Golf Carts

www.shedseasternshore.com

Email Marketing... chicago casual e... Most Visited Getting Started Latest Headlines Bookmarks

Pop's Market Home Map & Directions Gallery Reviews Our Market About Us

f t in v +

Pop's Market Inc | Amish Furniture, Sheds, Gazebo & More in Trappe, MD

Our highly recognizable building on Route 50 with an Amish buggy sitting up on the roof was built in 1992 and it features a truly unique assortment of furniture and other items including:

- Solid Wood Dining Room Sets, Hutches & Bedroom Sets
- Amish-made Curios, Coffee Tables, End Tables, Entertainment Centers, Bookcases,
- Marlinhouses, Birchhouses, Feeders & Mailboxes
- Lighthouses, Buoys, Pier Posts
- Golfcubles
- Antiques
- & Much More!

Our Outdoor Store also showcases hundreds of fine new and used products for your home, business, farm, yard or garden. Our top selling products continue to be wood and vinyl storage sheds. But we continue to add new items every year. Below is a list of just some of the hundreds and hundreds of products, accessories and equipment you can take home from right off our 5 acre lot at Pop's Market:

- Wood & Vinyl Sheds, Gazebos & Cabanas
- Washing Wells, Windmills, Lighthouses, & Trellises
- Children's Playhouses, Gyms & Playsets
- Poly & Wood Lawn Furniture, Solid Wood Picnic Tables
- Animal Shelters, Dog Houses, Cat Houses, Chicken Coops
- New, Used & Rebuilt Golf Carts, New Trailers
- New, Used & Rebuilt Farm Equipment including Tractors, Plows, Grasper Blades, Broadcast Spreaders, Planters and Disks
- & Much More

And of course, if we don't have exactly what you are looking for here on our lot, we will try to custom order it for you.

Contact Us
By email
By phone: 410-476-3900
Email me this info
Location



Local Newspapers | Lucy's Coupons | Lucy's Deals

PotechPocket[®] only 1[¢] Get it Now! (no shipping, online only)

business directory

Refine Search: Furniture

Category: Update Search

Within: of 19171 Postal code or City, ST

Scope: ☒ This Site ☐ National

2019 results found

1 2 202

F & C Amish Structures
1917 Pulaskee Highway, 322-436-1076
Visit

We are a company that has been serving the local community for over 30 years. All of our products are hand built and come directly from Lancaster, PA. These products are truly one of a kind.

Pop's Market Inc | Amish Furniture, Sheds, Gazebos & More in Trexton, NE
933 Ocean Gateway, 410-476-3300
Visit

...or highly recognizable building on Route 50 near an [amish shop](#) sitting up on the roof was built in 1952 and features a truly unique assortment of furniture and more items including food...

[view this directory listing](#)

Online Features

Write it, print it, live it... services
When you're at the multiple options in it... you're... full story

But that's not all... full story

everyone's view of healthier, more active full story

After 10 years of armed conflicts, man... full story

Millions of deals

Eastern Shore of Maryland Sheds, Gazebo, Farm Equipment, Amish Furniture, Golf Carts

www.shedseasternshore.com


Email Marketing... chicago casual e... Most Visited Getting Started Latest Headlines » Bookmarks

Eastern Shore of Maryland Shed... +

Pop's Market

Home Map & Directions Gallery Reviews Our Market About Us


f t in +



Pop's Market Inc | Amish Furniture, Sheds, Gazebo & More in Trappe, MD

Our highly recognizable building on Route 50 with an Amish buggy sitting up on the roof was built in 1992 and it features a truly unique assortment of furniture and other items including:


- Solid Wood Dining Room Sets, Hutches & Bedroom Sets
- Amish-made Curios, Coffee Tables, End Tables, Entertainment Centers, Bookcases,
- Marlinhouses, Birdbhouses, Feeders & Mailboxes
- Lighthouse, Buoys, Pier Posts
- Golfcoteables
- Antiques
- & Much More!



Our Outdoor Store also showcases hundreds of fine new and used products for your home, business, farm, yard or garden. Our top selling products continue to be wood and vinyl storage sheds. But we continue to add new items every year. Below is a list of just some of the hundreds and hundreds of products, accessories and equipment you can take home from right off our 5 acre lot at Pop's Market:

- Wood & Vinyl Sheds, Gazebos & Cabanas
- Washing Wells, Windmills, Lighthouse, & Trellises
- Children's Playhouses, Gyms & Playsets
- Poly & Wood Lawn Furniture, Solid Wood Picnic Tables
- Animal Shelters, Dog Houses, Cat Houses, Chicken Coops
- New, Used & Rebuilt Golf Carts, New Trailers
- New, Used & Rebuilt Farm Equipment including Tractors, Plows, Grapple Loaders, Broadcast Spreaders, Planters and more
- & Much More!


And of course, if we don't have exactly what you are looking for here on our lot, we will try to custom order it for you.



Contact Us

By email:
By phone: 410-476-3900
Email me this info

Location



Map data ©2012 Google - Terms of Use

The program:



Pop's Market Inc | Amish Furniture, Sheds, G

Our highly recognizable building on Route 50 with an Amish and it features a truly unique assortment of furniture and other products.

- Solid Wood Dining Room Sets, Hutches & Bedroom Sets
- Amish-made Curios, Coffee Tables, End Tables, Entertainment Centers, Bookcases,
- Mortuaries, Birthhouses, Feeders & Mailboxes
- Lighthouses, Buoys, Pier Posts
- Collectables
- Antiques
- & Much More!

Our Outdoor Store also showcases hundreds of fine new and farm, yard or garden. Our top selling products continue to be continue to add new items every year. Below is a list of just a few products, accessories and equipment you can take home from

- Wood & Vinyl Sheds, Gazebos & Cabanas
- Washing Wells, Windmills, Lighthouses, & Trellises
- Children's Playhouses, Gyms & Playsets
- Poly & Wood Lawn Furniture, Solid Wood Picnic Tables
- Animal Shelters, Dog Houses, Cat Houses, Chicken Coops
- New, Used & Rebuilt Golf Carts, New Trailers
- New, Used & Rebuilt Farm Equipment including Tractors, Pl
- Planters and Disks
- & Much More

And of course, if we don't have exactly what you are looking for here on our list, we will try to custom order it for you.

Pop's Market

Home Map & Directions Gallery Reviews Our Market About Us



About Us

For over 35 years, travelers and local residents on the Eastern Shore of Talbot County's most familiar landmarks right here at Pop's Market. 50 in Trappe MD, this popular family owned and operated store one of the Mid-shore's most well known marketplaces and distributor of goods in all sizes, shapes and styles, plus new modern farm equipment, golf carts & club cars and much, much more!

Pop's Market is actually two stores in one. We have an Indoor Store heart's content all day - whether you are shopping for the quality looking for something to add sparkle to your home or place of business generations of the Schwaninger family will be happy to assist you don't have it in the store, we will custom order it for you if it is available.

HOW IT ALL GOT STARTED

It all began in Schwaninger family, family business. Tim's father was a prosthetic hood a corn picker a helped our farm Caroline and Tim he was also a produce stand surrounding all breaking add garden. Aunt Mattie Simpson lived with Melvin and Tim's parents a of produce. The fact was that Aunt Mattie's garden was so large, it anyway. So we took what we could over to the produce stand and spare from her delicious pole limas, to the fresh tomatoes, squash, else she could dig up.

Eventually Tim's brother Melvin left his other full time job and the family started growing its own "truck crops" (all the produce that is sold at a farm market). We all operated the business activity as a produce stand for the first couple of years; then we started selling local crates.

Each year we grew a little larger. Each year added something new and the family business continued to grow and prosper. Truth is that at one point, Pop's Market almost outgrew the family. So we all got together and decided that maybe bigger was not always better. After that, we downsized the business so that the family could have along with the continued assistance of some of our highly valued p

PASSING THE BATON
As the years have gone by, new members of the family have been John (3rd generation) was pretty much raised in the Schwaninger very fond memories of selling crates, produce, working the truck on feeding the left over produce to the pigs that were being raised on

As the years have gone by, new members of the family have been John (3rd generation) was pretty much raised in the Schwaninger very fond memories of selling crates, produce, working the truck on feeding the left over produce to the pigs that were being raised on

As the years have gone by, new members of the family have been John (3rd generation) was pretty much raised in the Schwaninger very fond memories of selling crates, produce, working the truck on feeding the left over produce to the pigs that were being raised on

As the years have gone by, new members of the family have been John (3rd generation) was pretty much raised in the Schwaninger very fond memories of selling crates, produce, working the truck on feeding the left over produce to the pigs that were being raised on

As the years have gone by, new members of the family have been John (3rd generation) was pretty much raised in the Schwaninger very fond memories of selling crates, produce, working the truck on feeding the left over produce to the pigs that were being raised on

As the years have gone by, new members of the family have been John (3rd generation) was pretty much raised in the Schwaninger very fond memories of selling crates, produce, working the truck on feeding the left over produce to the pigs that were being raised on

As the years have gone by, new members of the family have been John (3rd generation) was pretty much raised in the Schwaninger very fond memories of selling crates, produce, working the truck on feeding the left over produce to the pigs that were being raised on

As the years have gone by, new members of the family have been John (3rd generation) was pretty much raised in the Schwaninger very fond memories of selling crates, produce, working the truck on feeding the left over produce to the pigs that were being raised on

As the years have gone by, new members of the family have been John (3rd generation) was pretty much raised in the Schwaninger very fond memories of selling crates, produce, working the truck on feeding the left over produce to the pigs that were being raised on

As the years have gone by, new members of the family have been John (3rd generation) was pretty much raised in the Schwaninger very fond memories of selling crates, produce, working the truck on feeding the left over produce to the pigs that were being raised on

As the years have gone by, new members of the family have been John (3rd generation) was pretty much raised in the Schwaninger very fond memories of selling crates, produce, working the truck on feeding the left over produce to the pigs that were being raised on

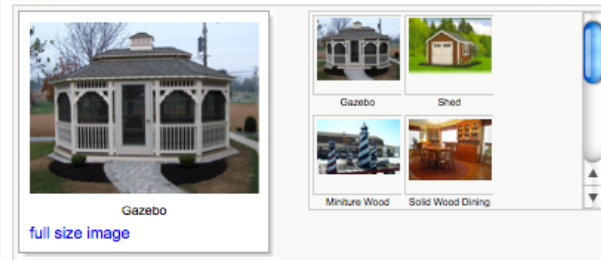
As the years have gone by, new members of the family have been John (3rd generation) was pretty much raised in the Schwaninger very fond memories of selling crates, produce, working the truck on feeding the left over produce to the pigs that were being raised on

Pop's Market

Home Map & Directions Gallery Reviews Our Market About Us



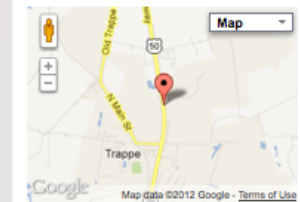
Pictures



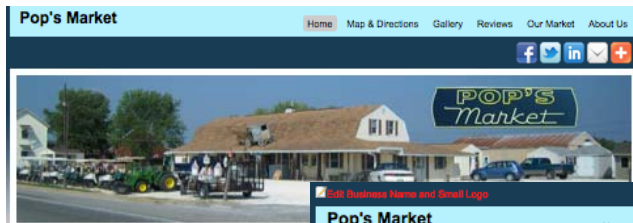
7 Pictures

Contact Us

[By email](#)
By phone: 410-476-3900
[Email me this info](#)
Location



The program:



Pop's Market Inc | Amish Furniture, Sheds, Gazebo & More

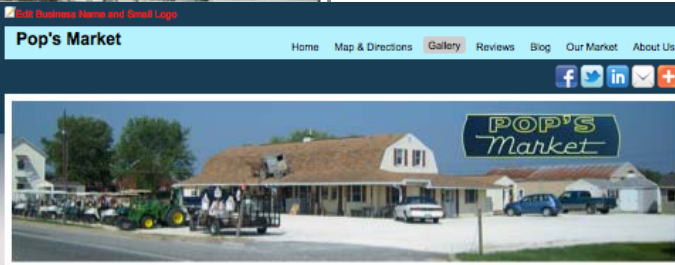
Our highly recognizable building on Route 50 with an Amish buggy sitting up and 1 features a truly unique assortment of furniture and other items including:

- Solid Wood Dining Room Sets, Hutches & Bedroom Sets
- Amish-made Curios, Coffee Tables, End Tables, Entertainment Centers, Bookcases,
- Munthouses, Birthouses, Feeders & Mailboxes
- Lighthouses, Buoys, Pier Posts
- Collectables
- Antiques
- & Much More!

Our Outdoor Store also showcases hundreds of fine new and used products for farm, yard or garden. Our top selling products continue to be wood and vinyl as we continue to add new items every year. Below is a list of just some of the hundreds of products, accessories and equipment you can take home from right off our 50

- Wood & Vinyl Sheds, Gazebos & Cabanas
- Washing Wells, Windmills, Lighthouses, & Trellises
- Children's Playhouses, Gyms & Playsets
- Poly & Wood Lawn Furniture, Solid Wood Picnic Tables
- Animal Shelters, Dog Houses, Cat Houses, Chicken Coops
- New, Used & Rebuilt Golf Carts, New Trailers
- New, Used & Rebuilt Farm Equipment including Tractors, Plows, Scraper Blades, Planters and Disks
- & Much More

And of course, if we don't have exactly what you are looking for here on our list, we will try to custom order it for you.



[Edit Page Header](#)

[Add a Video](#)

[Delete a Video](#)

[Sort Videos](#)

Videos

0 Videos



[Add a Slideshow](#)

[Delete a Slideshow](#)

[Sort Slideshows](#)

Slideshows

0 Slideshows



[Add a Picture](#)

[Delete a Picture](#)

[Sort Pictures](#)

[View All Pictures](#)

Pictures

7 Pictures



[full size image](#)



Minature Wood Solid Wood Dining

[Contact Us](#)

[By email](#)

By phone: 410-476-3900

[Email me this info](#)

[Location](#)



[Edit Email](#)

[Download Email Leads](#)

[Edit Business Name and Small Logo](#)

[Home](#)

[Map & Directions](#)

[Gallery](#)

[Reviews](#)

[Blog](#)

[Our Market](#)

[About Us](#)

[f](#) [t](#) [in](#) [v](#) [+](#)



[Edit Page Header](#)

[Add a Testimonial](#)

[Disable Reviews](#)

Reviews are user generated content. You have the ability to disable them but they provide consumers with the ability to rank your business (1-5 stars) and leave a comment about their experience with your business.

★★★★★

[Connect to Yelp](#)

[Contact Us](#)

[By email](#)

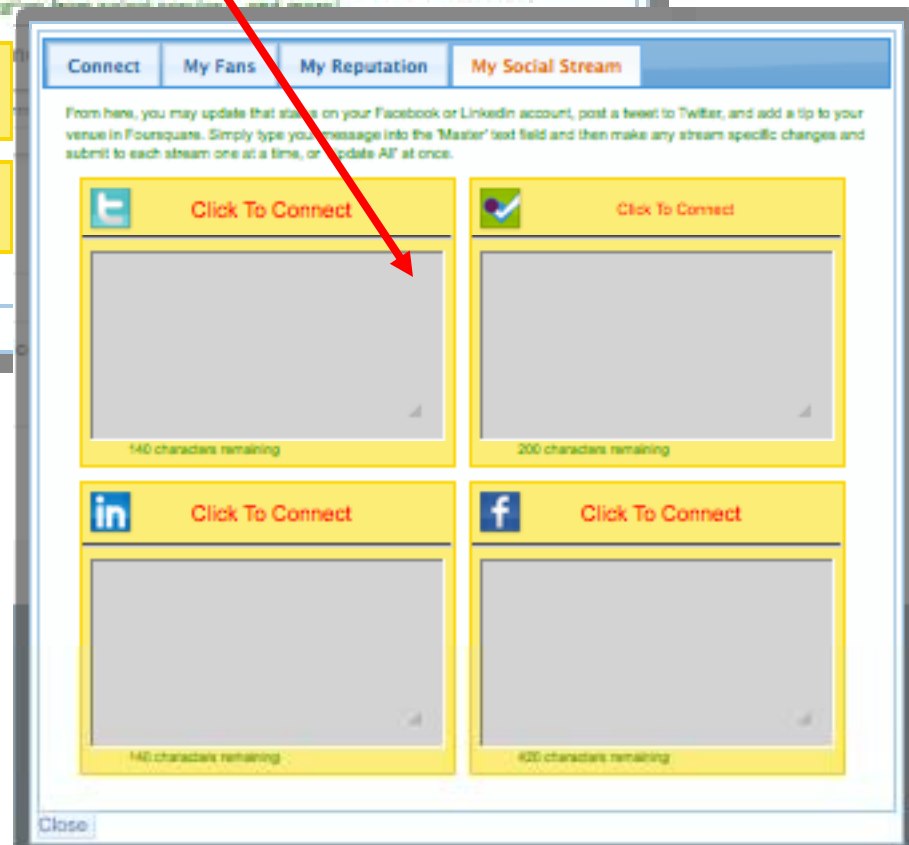
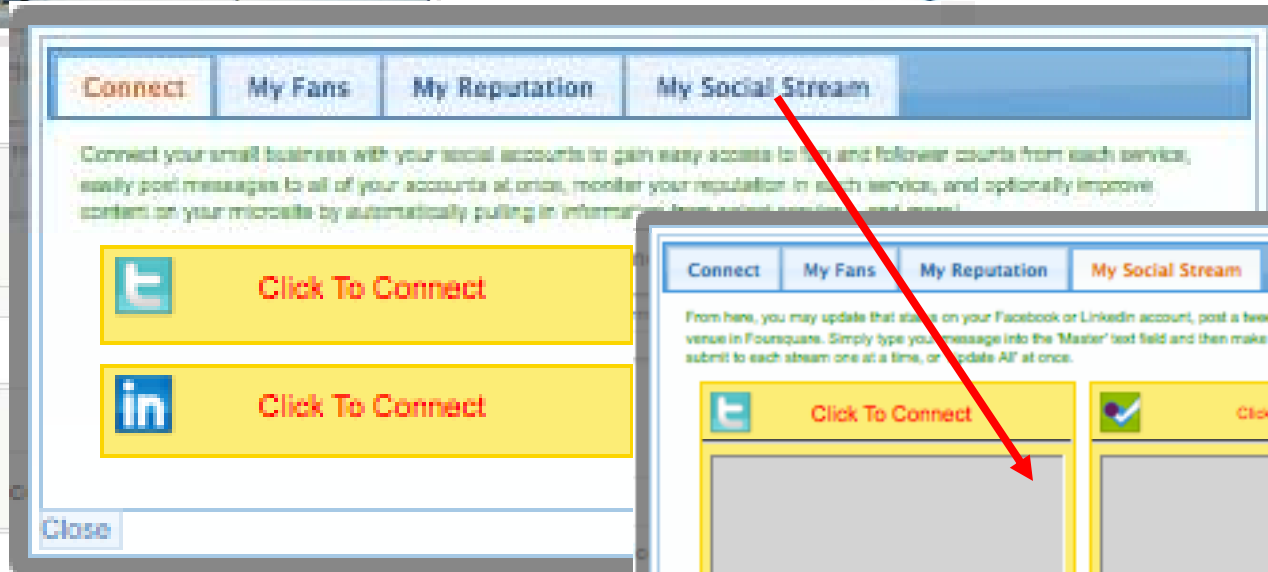
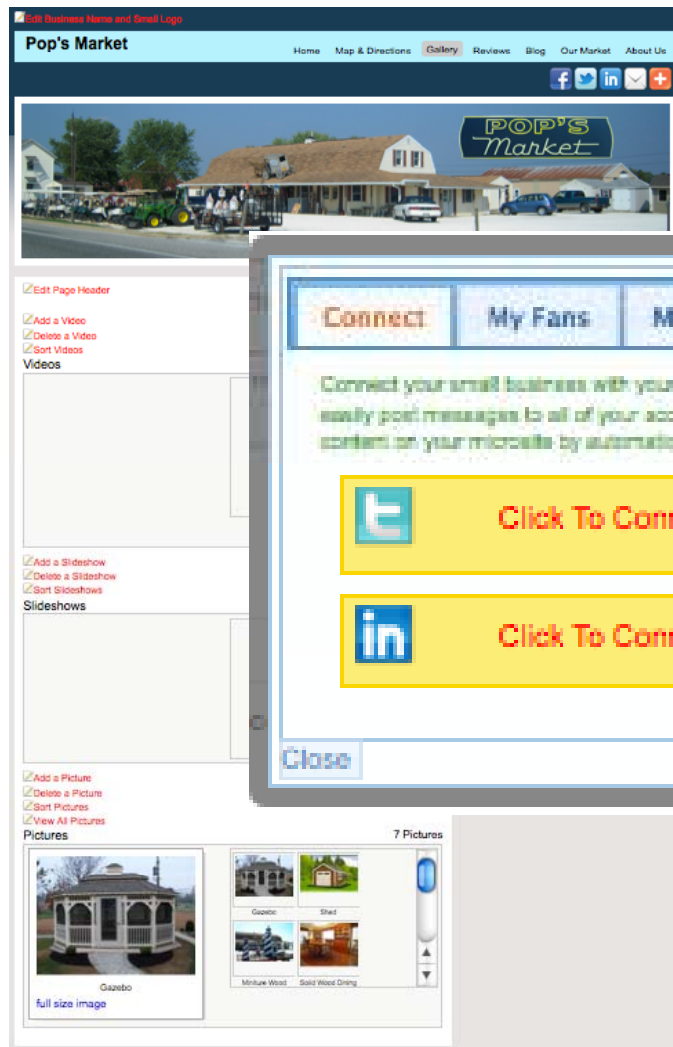
By phone: 410-476-3900

[Email me this info](#)

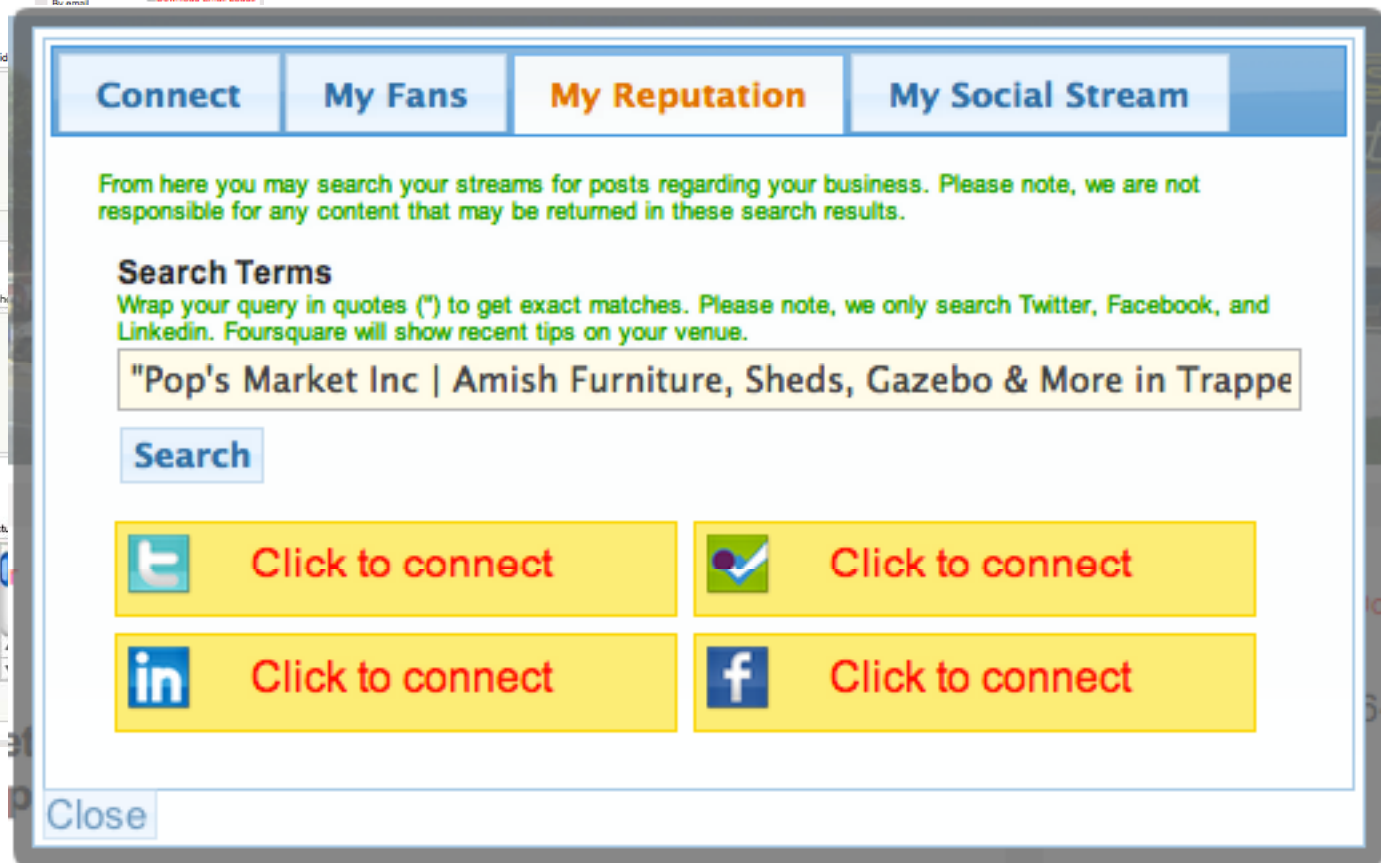
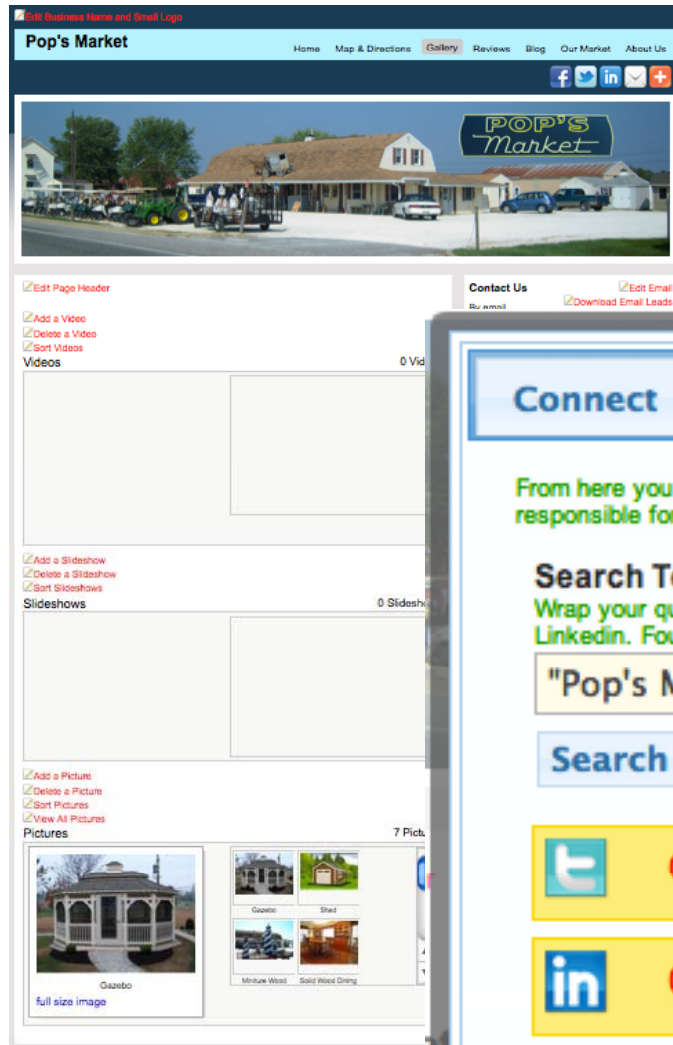
[Location](#)



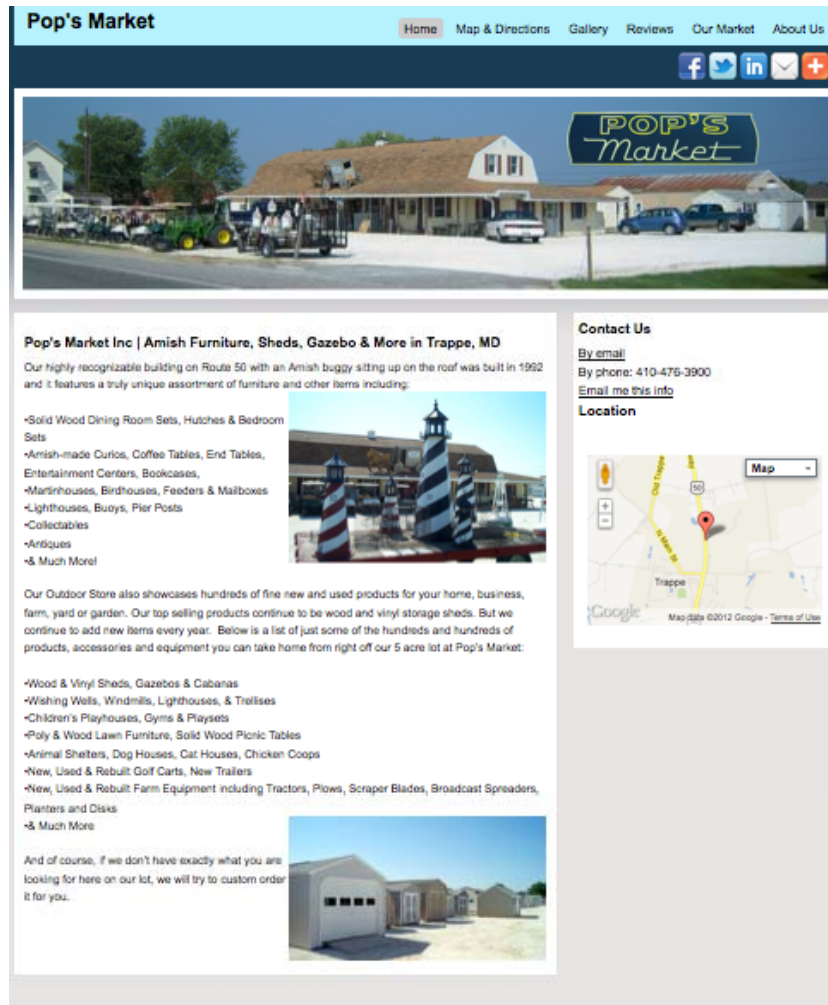
The program:



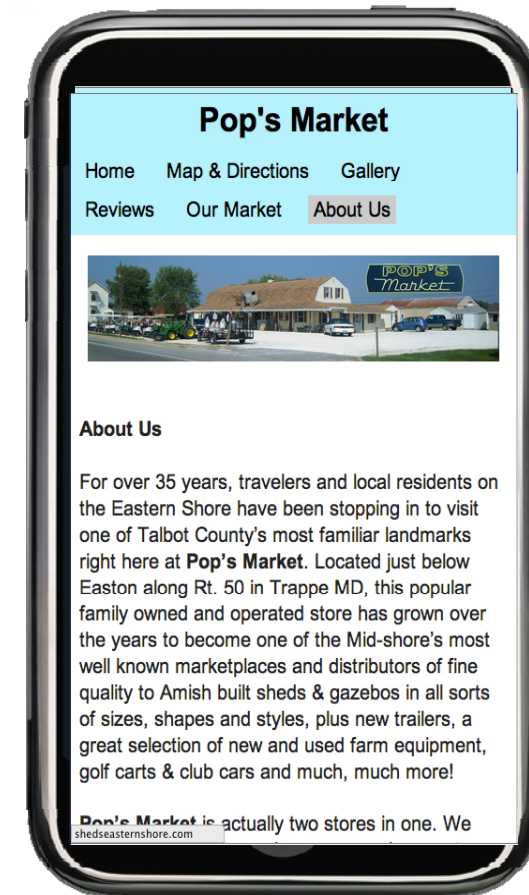
The program:



The program:



RADIATE
M E D I A



The Deployment

Contracted with Blinder Group

- Team training
- Developed sales collaterals
- Conducted Advertiser Workshops
- Provided guaranteed revenue with “in the car,” “4-legged” training/ closing calls



STARDEM.com
Powered by YOU and the STAR DEMOCRAT!

A Total Marketing Solution to Grow Your Business Cost Effectively!

Growing Audience

- 77,500+ unique readers each month!*
- Over 335,973+ pages of information each month*
- 64% of all adult internet users visit newspaper websites each month**

Affluent, Educated & Engaged Shopping Audience

- 74% of Adults in Households with \$100K or more visit newspaper websites**
- 26% will shop online at work during breaks***
- 48% of Consumers went online in past 7 days for Shopping and Planning Decisions***
- Educated – 60 % attended college****

MASSIVE Online Frequency!

STARDEM.com
 Local News State News National World
 Breaking News: Accident on state Route 404 near Hillsboro
 2012 CHESAPEAKE HOME, GARDEN & CRAFT EXPO
 Click Here For More Information April 14, 15 & 16 Talbot County Community Center

Talbot officials welcome home Vietnam veterans
 Eastern Talbot councils proclaim today as 'Welcome Home Vietnam Veterans Day'
 Story Submitting Image (3) View (2) Print (2) Add (2)

POP'S Market
25% OFF
 Amish Furniture, Gazebo's & Sheds
 4093 Ocean Gateway Trappe, Maryland
 410-476-3900

Find It In Chesapeake
 Search our Directory
 e.g. auto repair Search
 Search by category
 Categories

Follow Us
 Facebook Twitter RSS Newsletter

e-Mail List
 Find us on Facebook
 StarDemocrat Eastern
 1,000 people like StarDemocrat Eastern

STARDEM.com

POP'S Market
25% OFF
 Amish Furniture, Gazebo's & Sheds
 4093 Ocean Gateway Trappe, Maryland
 410-476-3900

“Big Box”
 your ad appears
60,000x
 per month





Reach Local Facebook Audience

STARDEM.com

Amish Furniture, Gazebos, & Sheds

SAVE 35% on All Dining Furniture
Solid Wood Dining Room Sets,
Curios, Coffee Tables,
Bookcases
410-476-3900



The screenshot shows a Facebook interface. The main content area displays 'The Crayola Experience' page with its profile picture, cover photo, and 'About' section. To the right, there's a sidebar with 'Likes' and 'People You May Know'. A red rectangular box highlights a sponsored advertisement for 'Amish Furniture, Gazebos, & Sheds' which includes the text 'SAVE 35% on All Dining Furniture' and the phone number '410-476-3900'.

Facebook Banner Ad

your ad appears

75,000x

per month

- Geo-targeted to adults who live within the Star Democrat Region
- Can be updated monthly
- Receive monthly reports on ad activity





Marketplace Furniture

<p>food & restaurants</p> <p>Joe's Super Cafe Monteville Restaurant... Wings to Go Denny's Waka Japanese Steak... See More...</p>	<p>hotels & lodging</p> <p>Hampton's Motel Inc... The Charles Inn La Quinta Inn & Suites... Cambridge House B & B The Redwood Inn & Spa See More...</p>	<p>autos</p> <p>Mega Car Wash Pro-Bond Auto Glass DRT Cycle LLC Bunting's Auto Repair Montrose Auto Parts See More...</p>
<p>beauty & wellness</p> <p>Collette Park Barber Shop Tanya's Nail Salon Hair Tonic Chad House Salon Coffins LTD See More...</p>	<p>real estate</p> <p>Linda Jack Realtor Partners Apts Concord Home Inspections BB Construction Abacus Property Man... See More...</p>	<p>health care</p> <p>Wainwright Robert E MD EmblemCare Family Dent... Drs. ACP Eye Care of Bethesda... Kathryn Kozak MD See More...</p>
<p>services</p> <p>Chesapeake Digital - Del... Colonial Jewelers Carter's Tire Service Inc... P & P Government Contract... Mitsubishi Washington... See More...</p>	<p>shopping</p> <p>F & C Amish Shop... Pop's Market Inc (Amish... P & P S-G See More...</p>	<p>other</p> <p>Frederick Carpet Co (Carpet... F & C Amish Shop... A.J. Bouten & Son Plumb... See More...</p>

featured businesses

Colonial Jewelers
110 E Van St, Silver Spring, MD 21157 phone: 410-390-2198
Colonial Jewelers has been a jewelry business in Cecil County since 1964. The store has been at the present location of 110 East Main Street, Silver Spring for over 50 years. It is a business and...
View Info - Add to the Directory - Add to the Favorites

Monteville Restaurant - Seafood, Sushi & Family Restaurant in St Michaels, MD
125 N. Tabor St., St. Michaels, MD 21660 phone: 410-745-0337
Family Run Enjoy our renowned family restaurant atmosphere with outdoor patio dining or inside dining. Park our vehicles on our outdoor deck. Charming views, authentic, Sushi Bar and American Diner. B...

Pop's Market Inc | Amish Furniture, Sheds, Gazebo & More in Trappe, MD
4093 Ocean Gateway, Trappe, MD 21673 phone: 410-476-3900
Our highly recognizable building on Route 50 with an Amish buggy sitting up on the roof was built in 1992 and it features a truly unique assortment of furniture and other items including: 6bu...

POP'S Market
25% OFF
Amish Furniture, Gazebo & Sheds
4093 Ocean Gateway, Trappe, Maryland
410-476-3900

List Your Business
Create a list
Claim It
Find your list
Upgrade
Enhance your list

Pop's Market Inc | Amish Furniture, Sheds, Gazebo & More in Trappe, MD

4093 Ocean Gateway, Trappe, MD 21673 phone: 410-476-3900

Our highly recognizable building on Route 50 with an Amish buggy sitting up on the roof was built in 1992 and it features a truly unique assortment of furniture and other items including: 6bu...

[more info](#) | [e-mail this directory listing](#) | [contact this business](#)

Online Features

Understanding asbestos: risk of exposure and costs
Asbestos exposure is a serious issue that affects millions of American workers. As a naturally oc...

Painters for prepping your back and backyard for summer fun
Warm weather is here to stay, which means people everywhere are spending more time outdoors. It's...

Translating a remodeling dream into reality
You've made the decision to remodel your home. The budget range and project scope have been set...

[More Online Features](#)

Kaspersky PURE Total Security
Get \$15 OFF
+ **N&R Block At Home FREE**
Hurry! Limited time offer.

Where **LOCAL** customers find your **LOCAL** business

FindItInChesapeake
Search our Directory
e.g. auto repair **Search**
Search by category
Categories

Local Directory Featured Position!

FindItInChesapeake.com

Local Newspapers - Lucy's Columns - Lucy's Deals

Kaspersky PURE Total Security
Get \$15 OFF
+ N&R Block At Home FREE

business directory

Before Search: Furniture

Update Search

Within: 10 miles of 21021 Postal code or City, ST

Scope:
☒ This Site
☐ National

2019 results found

1 2 202

Pop's Market Inc | Amish Furniture, Sheds, Gazebo & More in Trappe, MD
4093 Ocean Gateway, 410-476-3900
Trappe

Our highly recognizable building on Route 50 with an Amish buggy sitting up on the roof was built in 1992 and it features a truly unique assortment of furniture and other items including:

[e-mail this directory listing](#)

P & C Amish Structures
1907 Pulaski Highway, 302-438-1075
Dor

We are a company that has been serving the local community for over 30 years. All of our products are custom made and come directly from Lancaster, PA. These products include handcrafted furniture...

[e-mail this directory listing](#)

AAA Building Supply
4801 Pulaski Hwy, 410-276-3039
Baltimore

[e-mail this directory listing](#)

AAA Restorations Inc
4101 268 3734
Annapolis

[e-mail this directory listing](#)

A & A County
410 Calvert St Ste 1, 410-437-8877
Annapolis

[e-mail this directory listing](#)

A & C Kitchens & Baths
3022 681 8191
Birmingham

Map Satellite

POP'S Market
25% OFF
Amish Furniture, Gazebo & Sheds
4093 Ocean Gateway Trappe, Maryland
410-476-3900

List Your Business
Create a listing for your business

Claim Your Business
Find your business in the directory

Upgrade Your Business
Enhance your listing for advertising

Online Features

A small business owner's guide for choosing a fast, quality print version
Before the advent of digital printing, small business owners would be hard pressed to find a job...
[full story](#)

You can help: What to do if you suspect a child is being molested or abused
It's a too-common scenario: you see a parent with a toddler at the store. The toddler misbehaves...
[full story](#)

Get in gear for better gas mileage this spring with eco-friendly tires
With warmer weather coming its way across the country, people's attention is again turning to it...
[full story](#)

[More Online Features](#)

STARDEM.com

Enhanced Listing

- Above your competition!
- Stands out in all your category locations!

furniture

Pop's Market Inc | Amish Furniture, Sheds, Gazebo & More in Trappe, MD
4093 Ocean Gateway, 410-476-3900
Trappe

Our highly recognizable building on Route 50 with an Amish buggy sitting up on the roof was built in 1992 and it features a truly unique assortment of furniture and other items including:

[e-mail this directory listing](#)



Business Profile/ SEO

- Business Description
- Google Maps - directions
- Social Media & Email
- Insert Promotions & Video
- Manage look & feel of site
- Control SEO & Keywords

Pop's Market Inc. | Amish Furniture, Sheds, Gazebo & More in Trappe, MD
 Our highly recognizable building on Route 10 with an Amish buggy sitting on the roof was built in 1982 and it features a truly unique assortment of furniture and other items including:

- Solid Wood Dining Room Sets, Hutches & Bedroom Sets
- Amish-made Coffers, Coffee Tables, End Tables
- Entertainment Centers, Bookcases
- Mattresses, Boxsprings, Feeders & Stallions
- Lightboxes, Buses, Plan Press
- Cribsets
- Horseshoes
- A Much More!

Our Outdoor Store also showcases hundreds of fine new and used products for your home, business, farm, yard or garden. Our top selling products continue to be wood and vinyl storage sheds. But we continue to add new items every year. Come in a full of just some of the hundreds of products, accessories and equipment you can take home from right off our 5 acre lot at Pop's Market.

• Wood & Vinyl Sheds, Decking & Cabanas
 • Shipping Vests, Staircases, Lightboxes, & Toolboxes
 • Children's Playhouses, Gums & Picnics
 • Wheel & Wood Lawn Furniture, Solid Wood Picnic Tables
 • Animal Shelters, Egg Washers, Cold Houses, Chicken Coops
 • New, Used & Refurb Golf Carts, New Tractors
 • New, Used & Refurb Farm Equipment including Tractors, Pumps, Sprayer Mixers, Broadcast
 • Sprinklers, Planters and more
 • A Much More

And of course, if we don't have exactly what you are looking for here, let us let us will be to custom order it for you.

CONTACT US
 E-mail: info@popsmarket.com
 By phone: 410-421-1111
 Local: 410-421-1111

Locations
 Pop's Market Inc.
 10000 Rte. 10
 Trappe, MD 21797
 410-421-1111

Business Hours

Monday	Tuesday	Wednesday	Thursday	Friday	Saturday	Sunday
10 am - 5 pm	10 am - 5 pm	10 am - 5 pm	10 am - 5 pm	10 am - 5 pm	10 am - 5 pm	Closed

AGRI-TRUCKS
 410-421-1111
 410-421-1111

Business Plan

- Business Plan
- Good Business Plan
- Social Media
- Insurance
- Marketing
- Competition

POP'S Market Inc.
 10000 Rte. 10
 Trappe, MD 21797
 410-421-1111

AGRI-TRUCKS
 410-421-1111
 410-421-1111

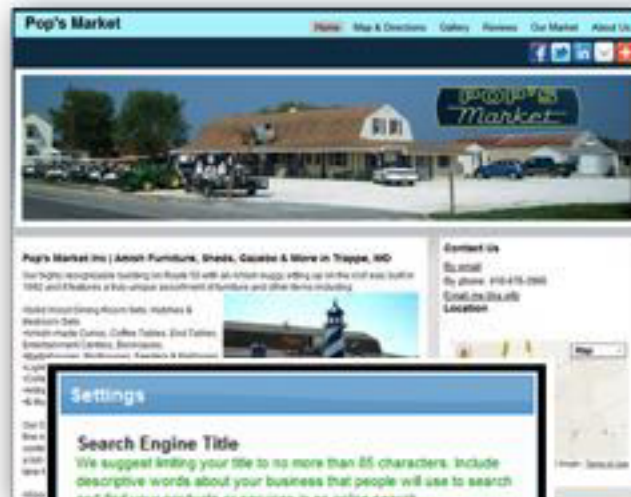
Locations
 Pop's Market Inc.
 10000 Rte. 10
 Trappe, MD 21797
 410-421-1111

Business Hours

Monday	Tuesday	Wednesday	Thursday	Friday	Saturday	Sunday
10 am - 5 pm	10 am - 5 pm	10 am - 5 pm	10 am - 5 pm	10 am - 5 pm	10 am - 5 pm	Closed

AGRI-TRUCKS
 410-421-1111
 410-421-1111

Manage Your Profile Page and Social Networking in one place!



- Control Your SEO
- Traffic by Search Engines & Keywords
- Call Tracking
- Social Media & Reputation Management



bing Find Amish furniture in Trappe, Maryland

Web More

YAHOO! Find Amish furniture in Trappe, Maryland 698,000 results

Google Find Amish furniture in Trappe, Maryland

Search About 3,070 results (0.25 seconds)

Everything

Ad for Find Amish furniture in Trappe, Maryland - Why this ad?

[Amish Furniture On Sale | BarnFurnitureMart.com](#)
www.barnfurnituremart.com/
Buy Beautiful Wood Furniture. Made Top Amish Craftsmen in The USA.
Amish Furniture - Dining Room Furniture - Bedroom Furniture

[Eastern Shore of Maryland Sheds, Gazebo, Farm Equipment, Amis...](#)
finditinchesaapeake.com/.../Eastern-Shore-of-Maryland-Sheds-Gazebo...
Pop's Market Inc | Amish Furniture, Sheds, Gazebo & More in Trappe, MD. Our highly recognizable ... Enter your address to get driving directions. Get Directions ...

[Amish Made Wood Vinyl Storage Sheds Furniture Eastern Shore ...](#)
www.popsmarket.com/
Located just below Easton along Rt. 50 in Trappe MD, this popular family owned ... whether you are shopping for fine quality Amish made wood furniture or just ... the Schwaringer family will be happy to assist you in finding just what you need ...
+ Show map of 4093 Ocean Gateway, Trappe, MD 21673
You visited this page on 3/31/12.

Search near...
Enter location
Set

Show search tools

[Trappe Amish Furniture in Your Local Yellow Pages by Yellowbook](#)
www.yellowbook.com/yellow-pages/?...amish+furniture...trappe%2C...
... by Yellowbook. Find local Amish Furniture business information the moment you need it. ... Results for 'amish furni

[Pops Market Inc. Trappe M](#)
www.merchandise.com/business/...
Find coupons, blogs, and newsletter
Furniture, Gazebos, Amish Crafts
+ Show map of 4093 Ocean Gateway

[Pop's Market INC in Trappe, MD | 4093 Ocean Hwy, Trappe, MD](#)
www.superpages.com/.../Trappe-MD/Pop's-Market-Inc-L010542412
Pop's Market INC in Trappe, MD -- Map, Phone Number, Reviews, Photos and Video Profile for Trappe Pop's Market ... Get the SuperGuarantee Before the Work Begins ...
Specializing in Fine Handmade, Amish Furniture. Oak, Pine, Cedar.

We list **Local Business pages** throughout the World Wide Web on Search Engines & Internet Directories

Find Amish furniture in Trappe, Maryland

[Eastern Shore of Maryland Sheds, Gazebo, Farm Equipment, Amis...](#)
finditinchesaapeake.com/.../Eastern-Shore-of-Maryland-Sheds-Gazebo...
Pop's Market Inc | Amish Furniture, Sheds, Gazebo & More in Trappe, MD. Our highly recognizable ... Enter your address to get driving directions. Get Directions ...

Best Value and Return on Investment

60,000x+ a month your ad appears on www.stardem.com



75,000x+ a month your ad appears on Facebook



Profile Page
Social Media – SEO - Promotion



Only
\$175 a week!

Current Rate: \$975 per month

Our Pledge to You:

We will provide all the solutions we have locally crafted as promised. And, provide any updates and modifications that are necessary to meet the changing technologies of the ever-changing digital landscape.

We will meet with you **PERSONALLY** at least once each month to review the performance of these solutions. And, if necessary, modify those offerings on an ongoing basis to optimize your results!

Failure to do so results in no charge for any of these services we are providing!

Newspaper Representative: _____

Date: _____



SoLoMo 2012

Maryland

Elkton

\$118,092 in revenue generated
60.8% closing ratios (on initial calls)

Easton:

\$82,736 in revenue generated
66.6% closing ratios (on initial calls)

\$225,000+

in new digital revenue

And growing!